

# Decarbonising the region: Upcoming opportunities

Richard McWilliams, Director, Sustainability Consulting



14 September 2021

making the **difference**



# Scaling net zero built environment outcomes in the region

---

1

Net Zero barriers can be overcome by collaboration

2

Grant Funding can be a key enabler – if you are ready

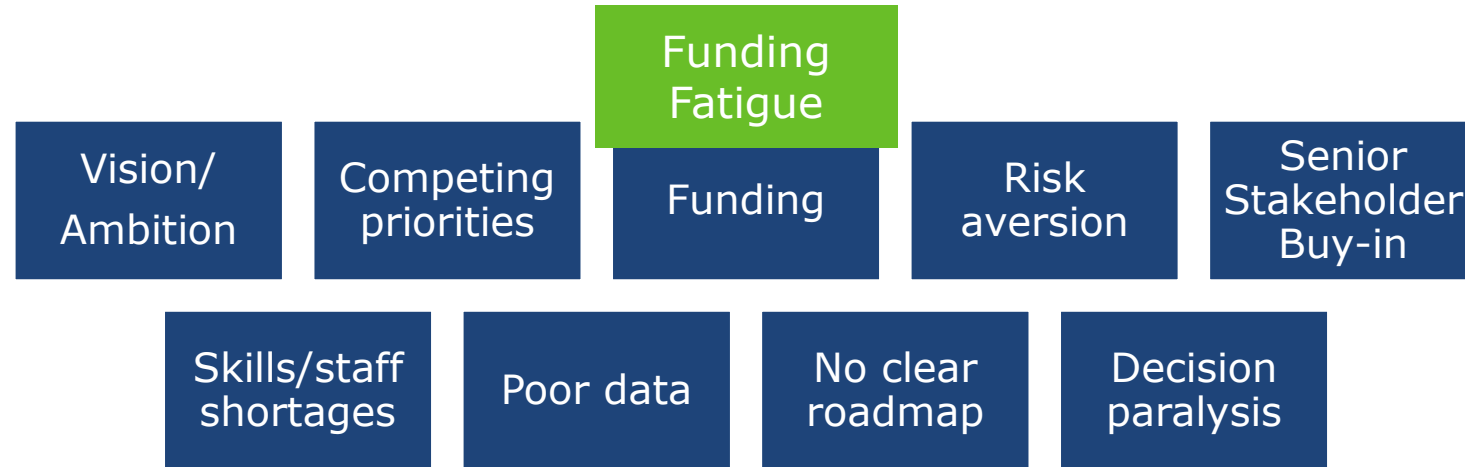
3

The ‘accelerator’ model offers a proven approach

*"An area-based accelerator approach, drawing together collaborators to share resources and experience, can maximise the scale and pace of realising our low carbon outcomes."*

# The barriers to our low carbon future are many...

---



*Sharing skills, experiences, people resources, tools and templates can help us to address a (global) collective challenge in a (local) collective way*



# Grant funding is a key enabler

## Public Sector Decarbonisation Scheme 3

- **Focus on decarbonisation of Heat**
- Pot scale not confirmed (...very big?)
- Whole building approach
- Covers marginal costs
- Must show 'additionality'
- Multi-year scheme (3 yrs)
- £325/tCO<sub>2</sub>e

## Social Housing Decarbonisation Fund

- **Fabric first, worst first, lowest regrests, PAS 2035**
- £3.8Bn over 10 yrs, wave 1 @ £160m
- Cost caps for each EPC band to reach EPC C
- Support available – masterclasses, group events, bespoke 1:1 support
- **Home - SHRA ([socialhousingretrofit.org.uk](https://socialhousingretrofit.org.uk))**
- Bids must be led by a Local Authority
- Housing Associations able to participate

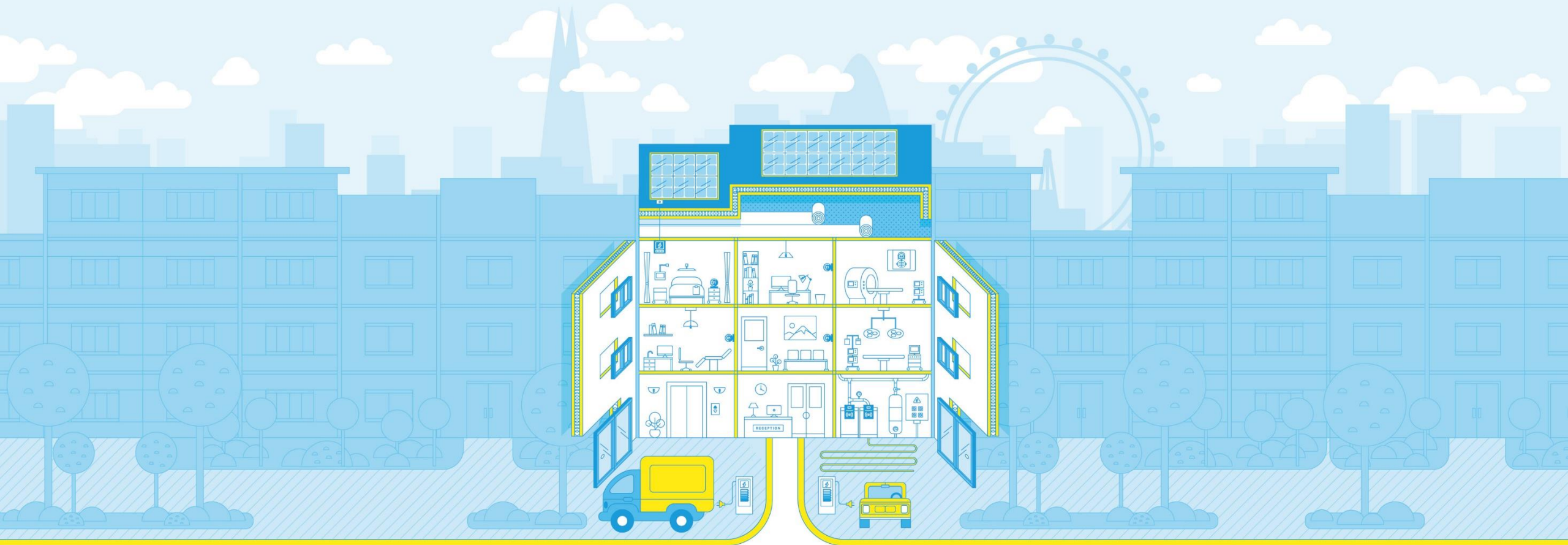
- Details issued 15<sup>th</sup> Sept (tomorrow!)
- **Opens 6<sup>th</sup> October-3<sup>rd</sup> Nov (First come...)**

- **Competition open until Oct 15<sup>th</sup>**



## MAYOR OF LONDON

# Retrofit Accelerator - Workplaces



## RETROFIT ACCELERATOR – WORKPLACES

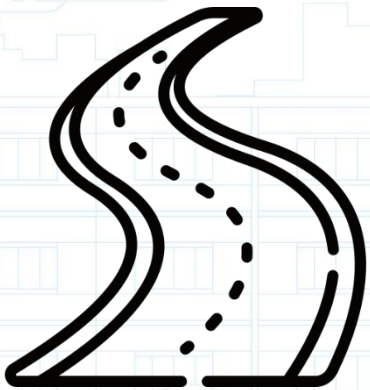
---

**Retrofit Accelerator – Workplaces** is a tried & tested **carbon and energy** reduction programme aiming to transform London's energy inefficient **public buildings**, and create **a more sustainable city** today and for future generations.

A detailed line-art illustration of a sustainable urban environment. It features various buildings, including a large office building with a grid-like facade and a smaller building with a sign that says 'RECEPTION'. There are many trees of different shapes and sizes, some with circular canopies. A delivery truck is shown on the left, and a car is on the right. The scene is set on a street with a sidewalk and a road. The overall style is clean and modern, with a focus on green infrastructure and urban planning.

## RETROFIT ACCELERATOR – WORKPLACES

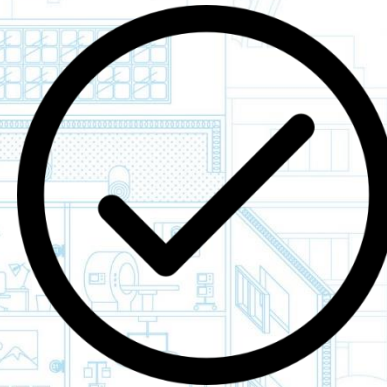
### What is Retrofit Accelerator – Workplaces?



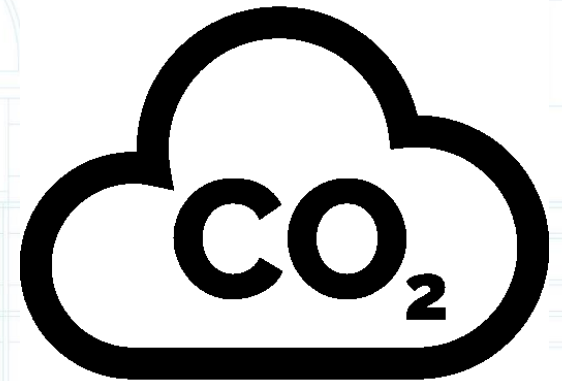
Ambitious and  
achievable  
roadmap to net zero



Fully funded  
end-to-end support



You keep 100% of  
the savings, no  
hidden catches

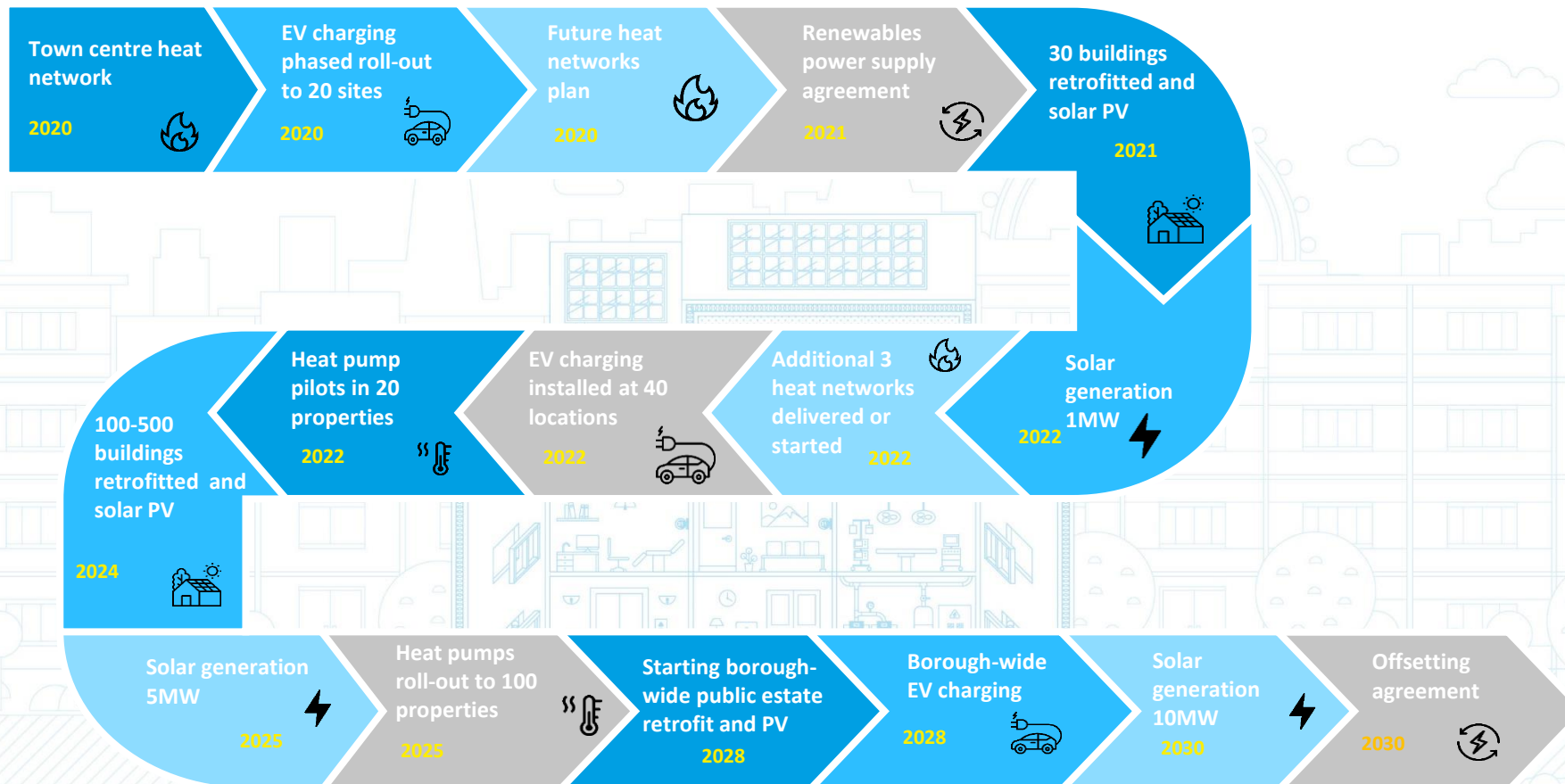


Guaranteed performance  
and energy and carbon  
savings



# RETROFIT ACCELERATOR – WORKPLACES

Part of your **roadmap to net zero** to turn ambition into projects, planned, procured and implemented





## RETROFIT ACCELERATOR – WORKPLACES

---

### The **support** on offer:

- Project **development and feasibility**
- Help to build the **business case**
- Support in accessing **finance and funding options**
- Support to appoint the **best contractors**
- Assistance in **mobilising the project**
- Training and capacity building **project support**

## RETROFIT ACCELERATOR – WORKPLACES

Working in partnership with **best-in-class providers** through the OJEU compliant RE:FIT Framework, as well as your own preferred and local suppliers

AMERESCO

Cenergist

ENGIE

Statkraft

Asset+  
energy performance

centrica  
Business Solutions

mi-space

sse  
Enterprise

BOUYGUES  
ENERGIES & SERVICES

e-on

switch2

VEOLIA

BREATHE  
professional carbon & energy reduction

edf

SPIE

VITAL  
ENERGi

# RETROFIT ACCELERATOR – WORKPLACES

## Our achievements so far



**11yrs**

Transforming  
London's public  
buildings



**38,000**

tonnes of  
carbon saved  
each year



**800+**

Buildings  
supported for  
retrofit



**£140m**

Total investment  
in retrofit  
projects



**220+**

Public sector  
organisations  
participating



**210,000**

tonnes of  
carbon saved  
so far



**£9m**

Public sector  
savings each  
year



**110 GWh**

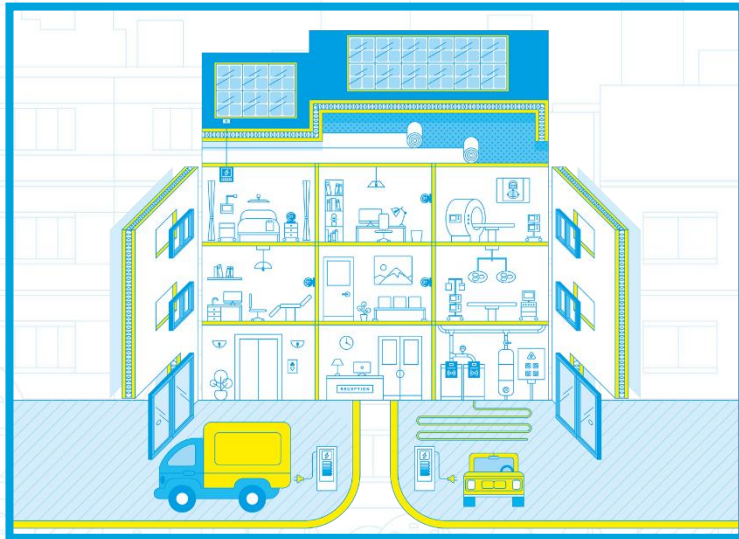
of energy saved  
each year



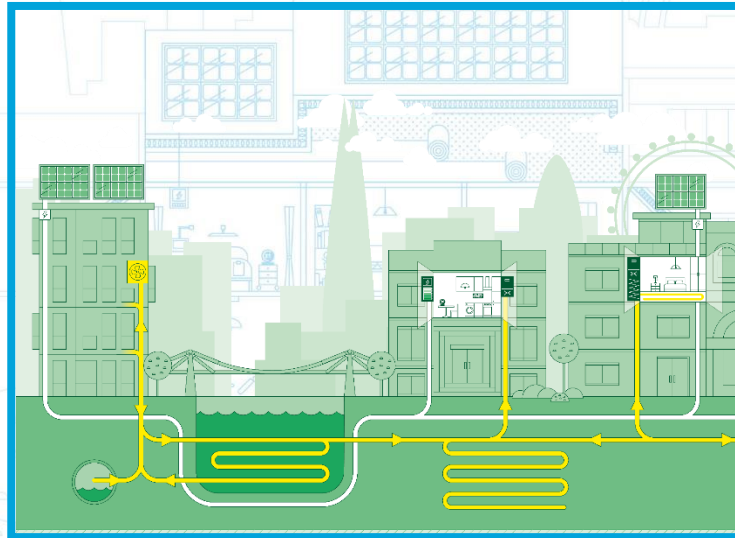
## RETROFIT ACCELERATOR – WORKPLACES

Seamless collaboration across the Mayor of London's Retrofit Accelerators to **include housing and energy in the scope** of your project.

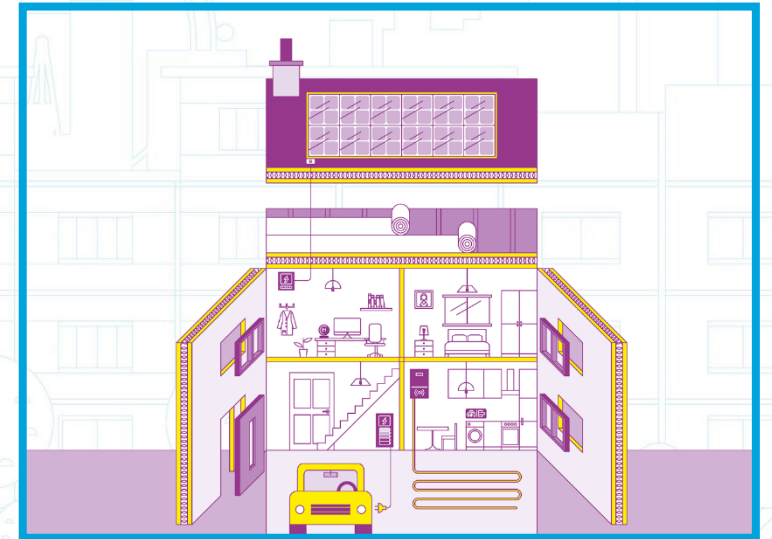
Workplaces



Local Energy



Homes





Turner & Townsend Consulting Limited  
One New Change  
London  
EC4M 9AF

---

t: +44 (0)20 7544 4000  
e: [richard.mcwilliams@turntown.co.uk](mailto:richard.mcwilliams@turntown.co.uk)  
[www.turnerandtowntsend.com](http://www.turnerandtowntsend.com)

© Turner & Townsend Consulting Limited. This content is for general information purposes only and does not purport to constitute professional advice. We do not make any representation or give any warranty, express or implied, and shall not be liable for any losses or damages whatsoever, arising from reliance on information contained in this document.

It must not be made available or copied or otherwise quoted or referred to in whole or in part in any way, including orally, to any other party without our express written permission and we accept no liability of whatsoever nature for any use by any other party.